

CENTINEL

PRODUCT OVERVIEW

The **CENTINEL** manual barrier, by incorporating an internal spring balance mechanism, has achieved a compact slim line appearance, that will complement the entrance to a modern office park.

The **CENTINEL** is constructed to be strong and durable with all balance components shielded within the casing. The barrier is available in both right or left hand operating configurations. The operating lever is designed for comfortable and easy handling of the pole.

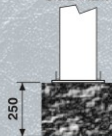
The **CENTINEL** is fitted with a convenient thumbwheel which is used to secure the pole in the horizontal and vertical positions. As an option a camlock can be fitted for locking the thumbwheel.

TECHNICAL SPECIFICATIONS

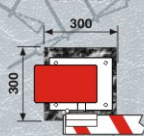
- Standard boom lengths - 3m, 4.5m, & 6m (maximum)
- Internal spring counterbalance.
- Mild steel or stainless steel enclosure (Grade 430 or equivalent).
- Thumbwheel to secure pole (Camlock optional).
- Boom pole - Standard, 76mm round aluminium with reflective tape (Coupler for other pole profiles available on request).
- Optional catch post.
- Mass of unit excluding pole - 27.5kg.

MOUNTING DIMENSIONS

SIDE VIEW

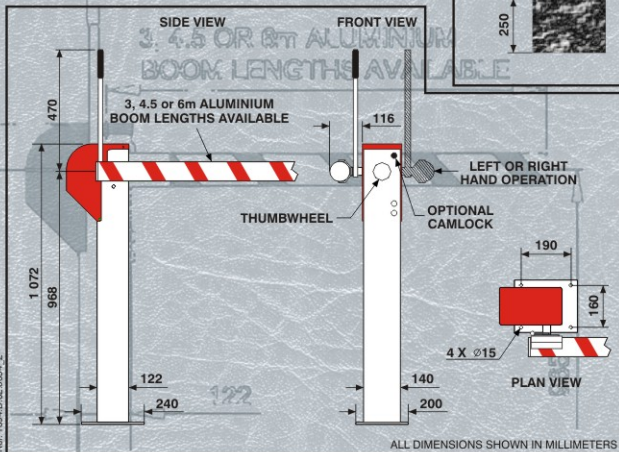


PLAN VIEW



RECOMMENDED CONCRETE PLINTH

DIMENSIONAL SPECIFICATIONS



OPTIONAL CATCHPOST

ISOMETRIC VIEW

